



LAS-IAM™

Image Analysis Module for LAS™

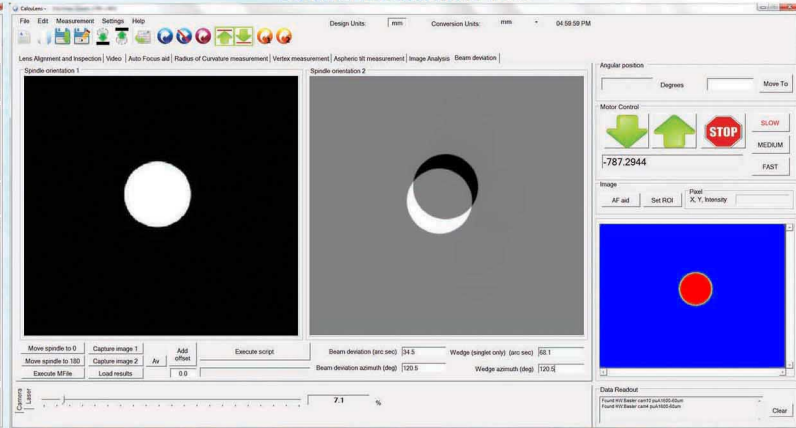
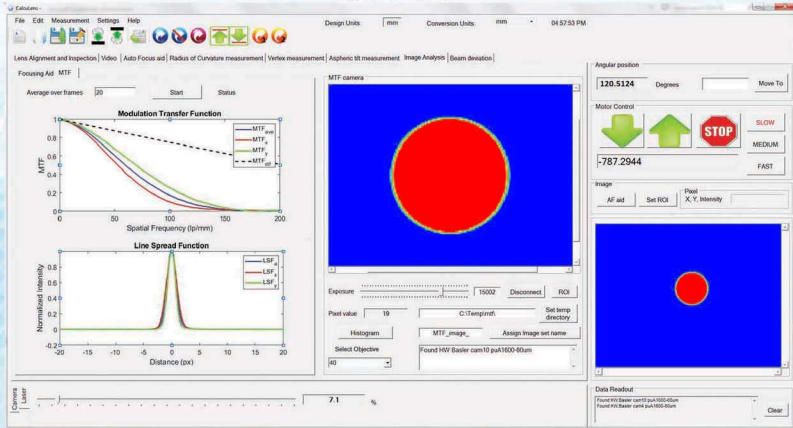
- Designed for in-situ transmission measurements of on-axis MTF, EFL, BFL, FFL and ROC (with Vertex Measurement option)
- Combining the merits of patented LAS™ imaging and advanced reticle projection technologies, the Image Analysis Module (IAM) offers unparalleled measurement accuracy with great efficiency
- Intuitive IAM software user-interface (UI) provides customers with seamless operation. Fully integrated with the universal LAS Calculens™ software
- Measurement range scales with the height of the LAS vertical stage
- Both sagittal and tangential MTF can be measured and reported



CalcuImage™ Application Software for IAM:

MTF Tab

Beam Deviation Tab



Technical Specifications:

Common Technical Specs	
MTF Accuracy (up to 150 lp/mm)	2%
EFL Accuracy	0.03% → 0.3%
Wavelength	520 nm

	IAM-BT	LAS-BT 533mm	LAS-BT 633mm	LAS-P 1000mm	LAS-P 1500mm	LAS-P 2000mm	
Clear Aperture	22 mm			24 mm			
Measurement Range	20 mm Objective				+ 5mm → +50mm - 5mm → -15mm		
	40 mm Objective				+ 10mm → +130mm - 10mm → -35mm		
	125 mm Objective	+ 30mm → +320mm	+ 30mm → +220mm	+ 30mm → +320mm - 30mm → -120mm			
	150 mm Objective	+ 35mm → +390mm	+ 35mm → +195mm	+ 35mm → +295mm	+ 35mm → +390mm - 35mm → -145mm		
	400 mm Objective	+ 100mm → +140mm	N/A	N/A	+ 100mm → +410mm	+ 100mm → +910mm	+ 100mm → +1040mm - 100mm → -395mm

